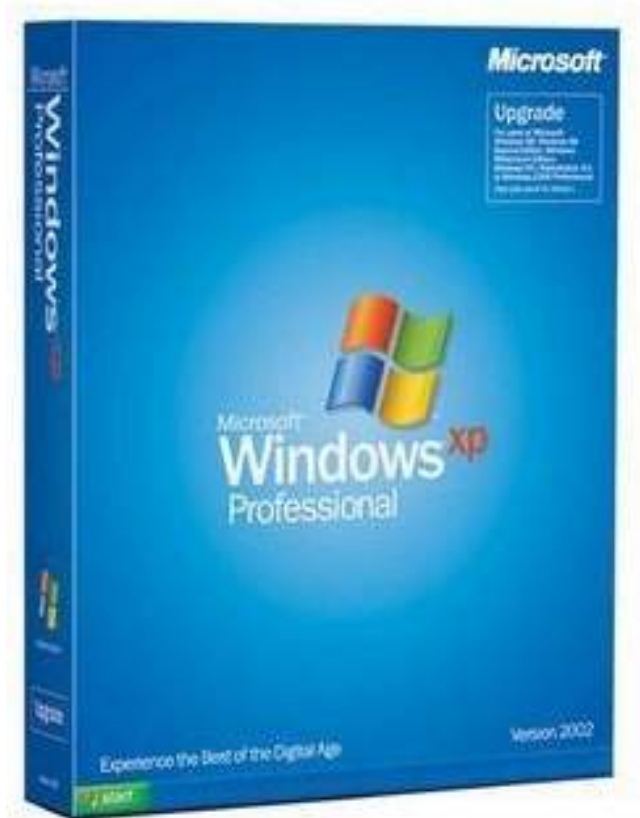


*I got the Laptop (Toshiba-Satellite) working but I had to wipe the drive completely and then install the XP.  
But how? please help!!!*



*I'm having the same problem too. I've been up since like 1 AM trying to get this working. My problem is that I get to install Xp and it works fine but then when I do the EasyBCD i can't change the drive letter. It just stays on C: then I get some weird message. I followed all the steps and even used Vista Boot loader but still nothing works. I even used your steps but nothing happens. Any suggestions? My Vista is on C: and my xp ends being on K: because my other drives take up the other letters. Plz help!*

*I have a Dell that came with Vista, I don't want to dual boot, I just want to wipe Vista, and Use XP. I have read all of the posts, and have done much of the process so far, but I am trying to install the XP portion, and I am able to boot from my CD to start the installation, and it get's going, but when I come to the screen to either:*

*Set up XP - hit Enter*

*Repair - hit R*

*Exit - hit F3*

*then nothing happens. It's like my Keyboard shuts off. But if I ever go into any other set up screens, or configuration pages, it's always fine. It's brand new. Is there anything I need to change to get this to work? If any one has any suggestions, or can give me the easiest way to format my drives, and just install XP, that would be great. Thanks!!!*

*I want to install XP on D: drive keeping Vista on C: So, as I boot from the CD (by the way I changed the BIOS for SATA to ATA), xp installation starts loading driver files. Then I see a message saying "Set-up is starting Windows Installation" and then the blue screen showing some error appears (which I think is because of xp being unable to detect SATA). So,*

*1) How do I install these drivers for SATA?*

*2) How do I get to the point where actually I can select a drive to begin XP installation?*

*please anyone here help me .....I have a vista on my toshiba A200 satellite laptop....*

*I had a tough time with this vista...I preferred to install xp when i tried to do so...*

*during boot session it came a s "HARDDISK NOT INSTALLED"*

*I searched in internet and I found many solutions but none worked for me can any one pls guide me.....I will be thank full to you.....*

*Hello,*

*is it possible to change the os vista home to windows xp pro on my notebook hp compaq 6710b, if so, i am getting blue screen of death whilst installing windows xp. i have formatted HD and erased vista os so have clean hard drive, but, just will not load XP Pro. Can anybody please help me how?*

## **Changing VISTA TO XP**

The main big problem to start installing Windows XP on a new notebook is the SATA Hard Drive that comes with it has not built-in drivers, we have to add them via floppy, but in the most of cases, we won't have a floppy able to mount into the laptop.

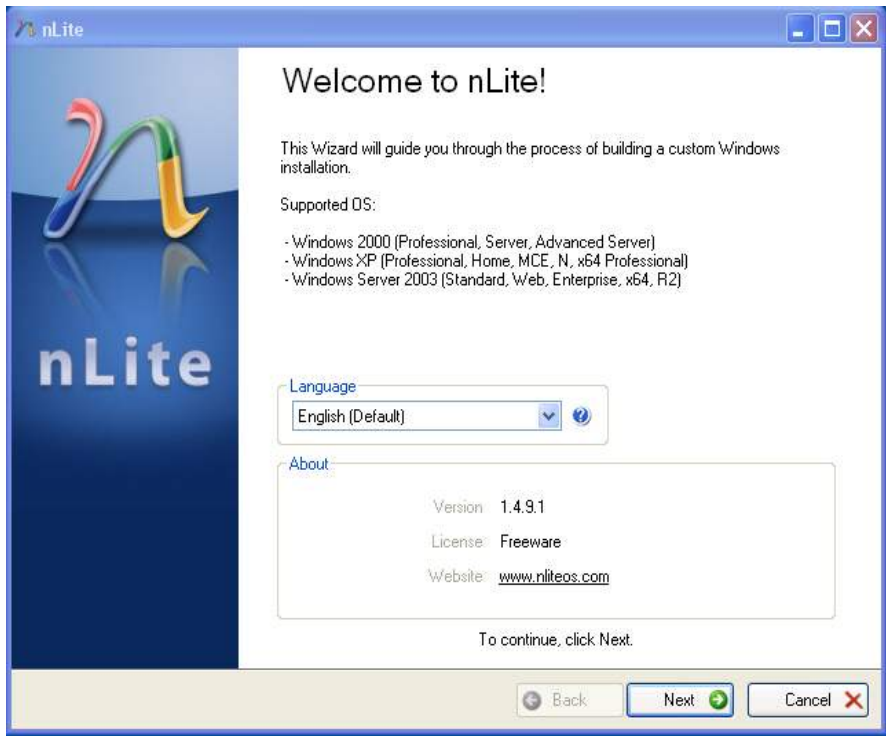
**First we need to integrate sata drivers into xp cd. Otherwise, our notebook could not recognize our hdd and we can't install xp.**

**What you need?**

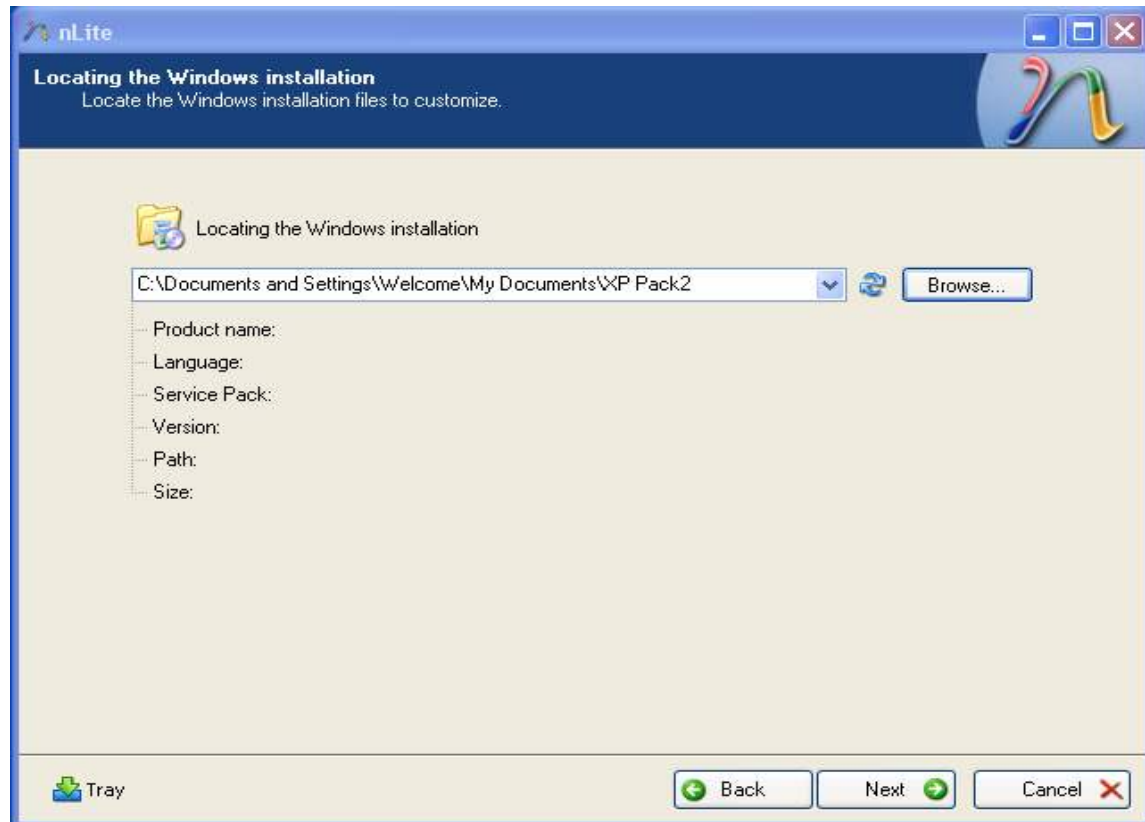
1. 1 empty cd.
2. Sata drivers
  - [www.dig-info.net/computer](http://www.dig-info.net/computer)
3. Microsoft .net framework. you can download it from [here](#).
4. A software which called [nLite](#). You can download nLite from [www.nliteos.com/download.html](http://www.nliteos.com/download.html)

**Please follow .**

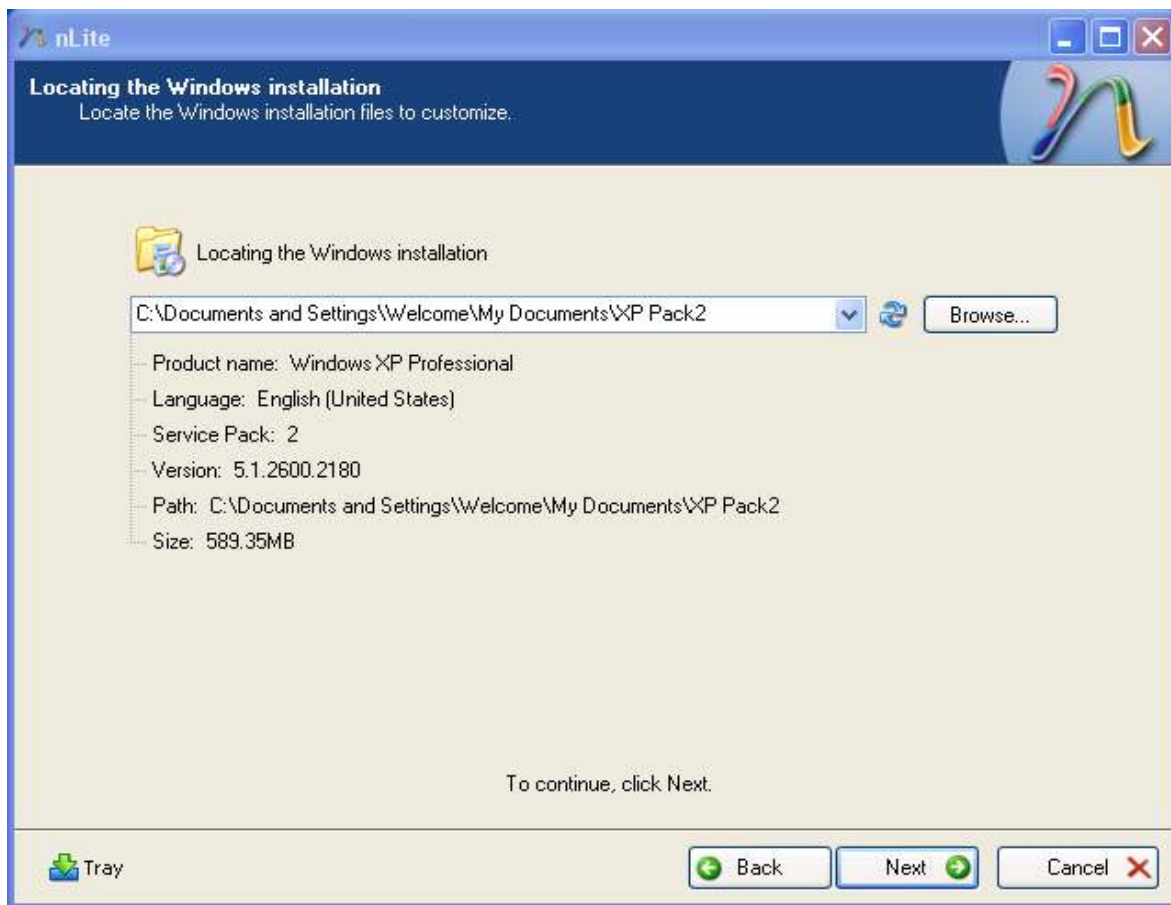
1. Download an unzip sata drivers a folder "sata drivers"
2. Create a folder somewhere on your hard drive to copy the windows source files into. called "XP Sata Source" but you can use whatever name you prefer. Just make sure there is adequate space on your hard drive to hold the files.
3. Copy the **full XP Pack2** content from the distribution cd into this folder
4. Start nLite.
5. Welcome screen shows you which version of nLite you are running and allows you to choose an alternate language. To continue click on Next.

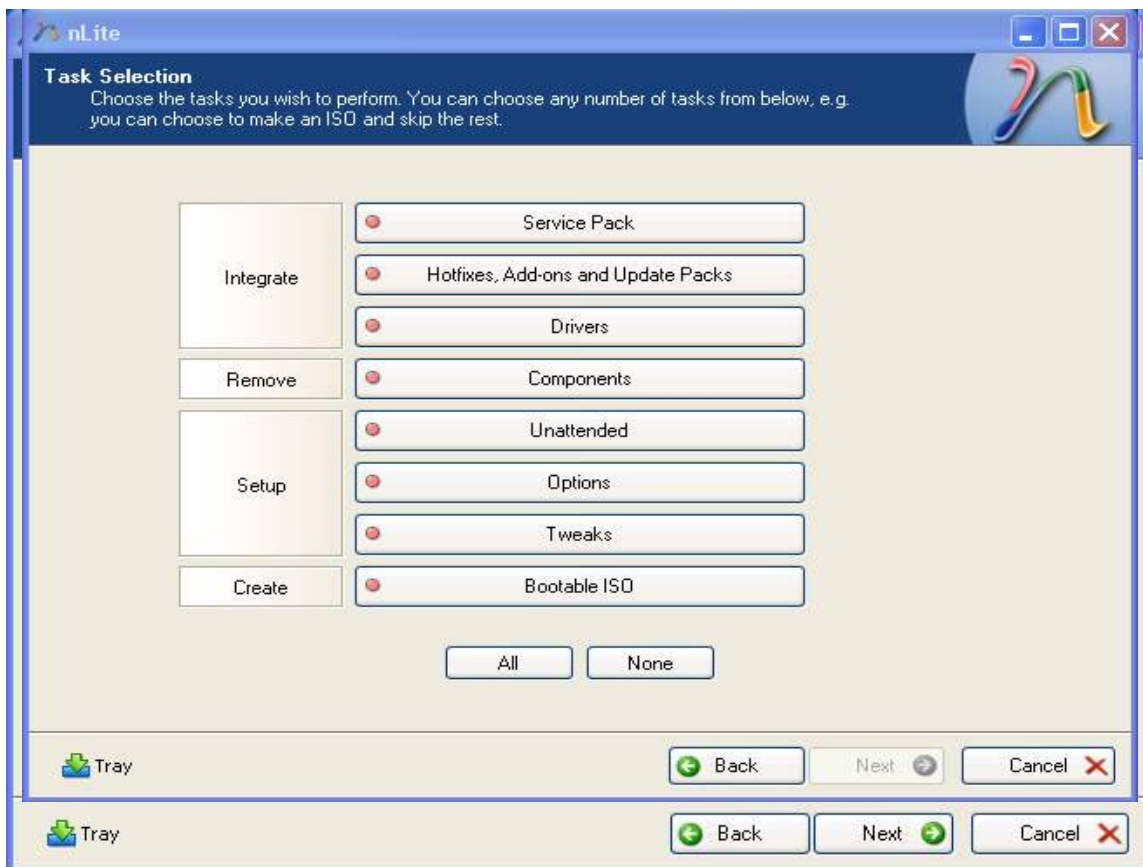


6. We must now direct nLite to the folder which contains the windows installation files.

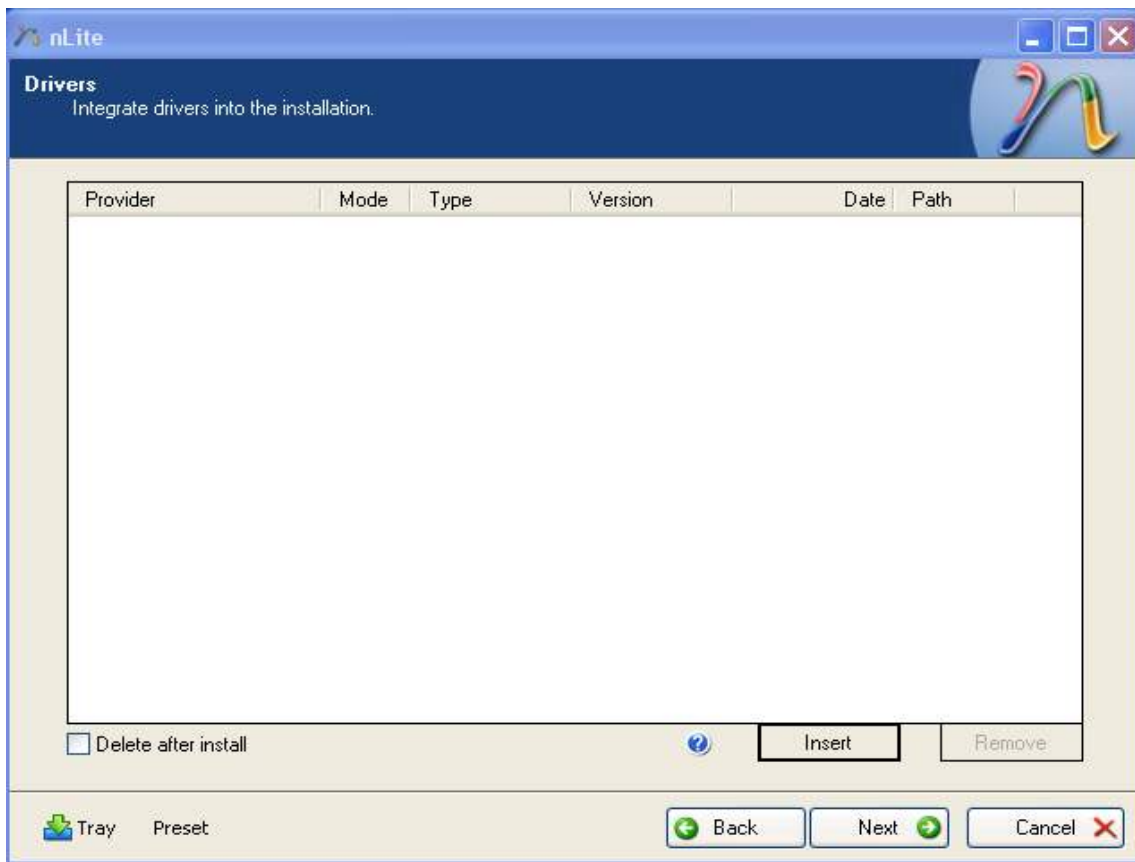


7. To do this Click on Browse. And choose „Xp Sata Source“ folder. Click next.  
Click next without doing anything.

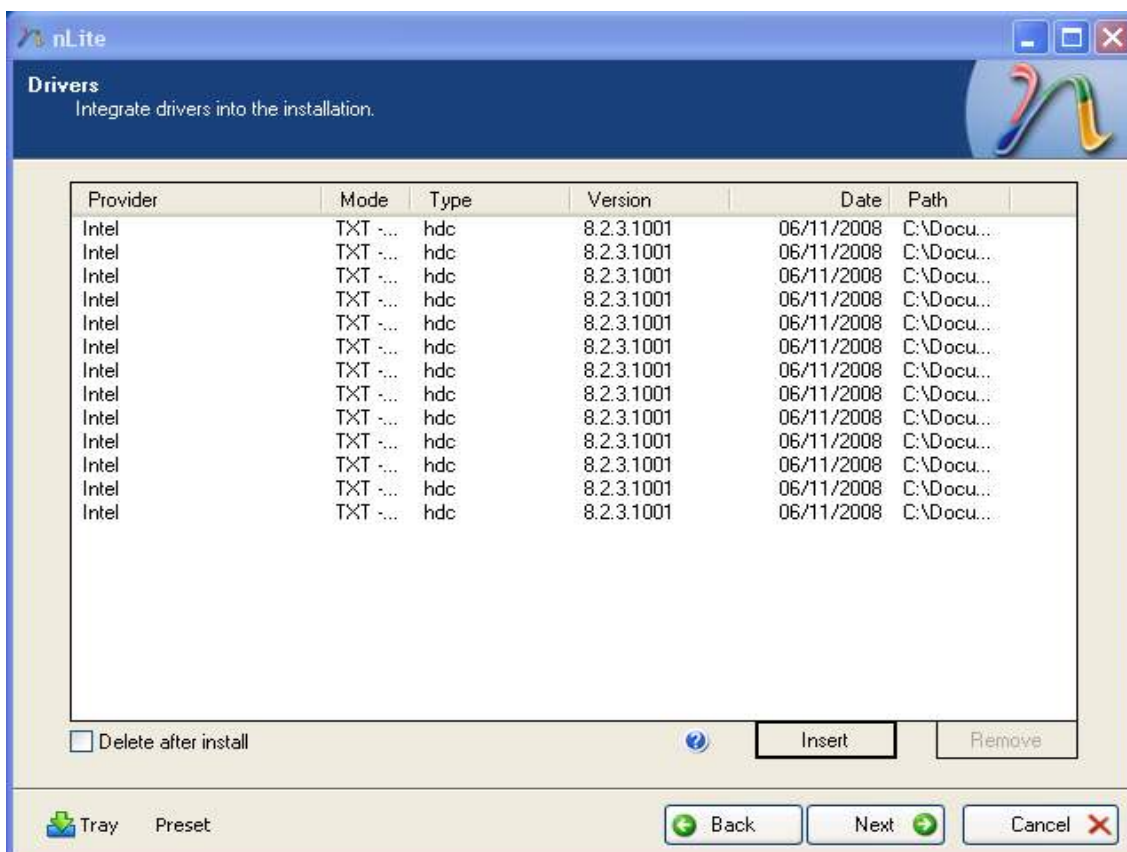
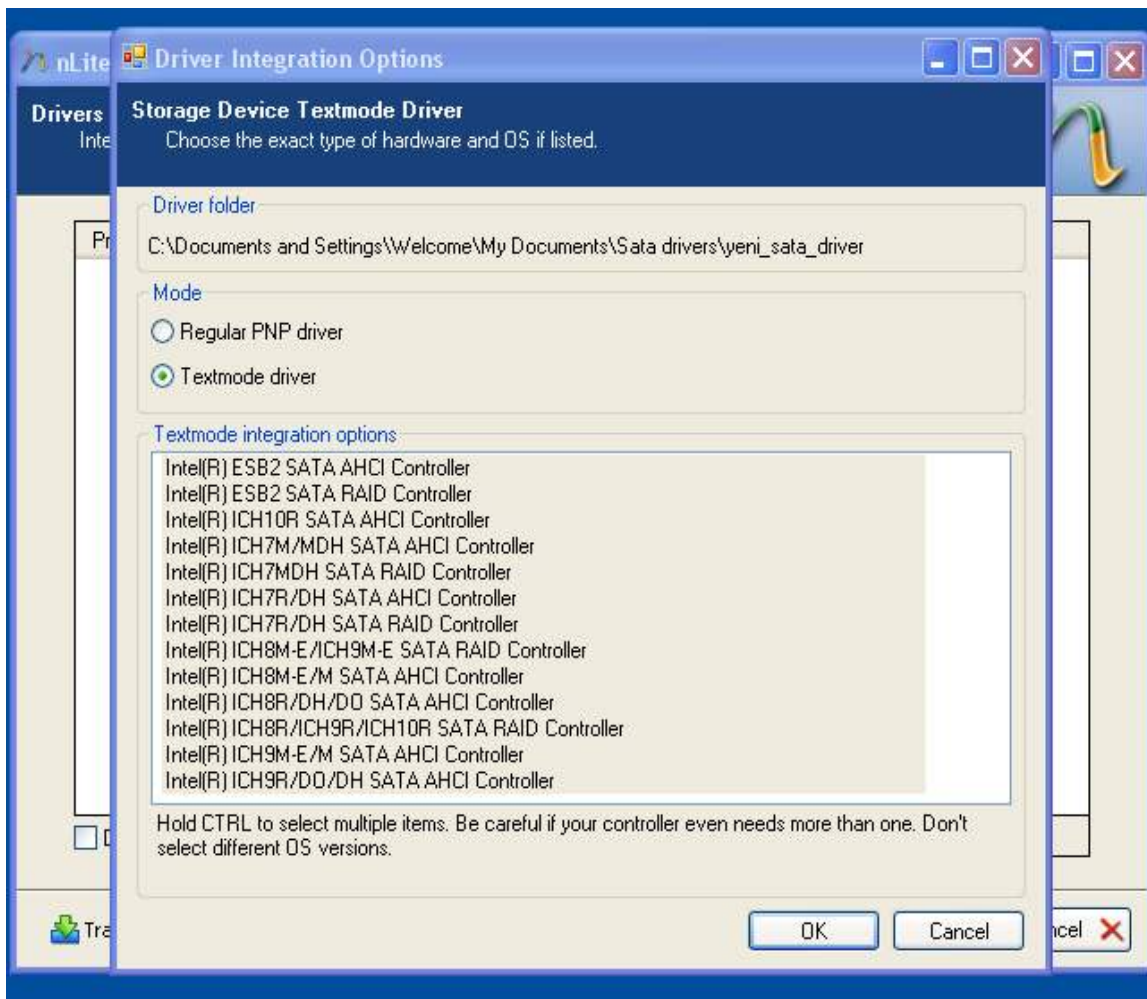




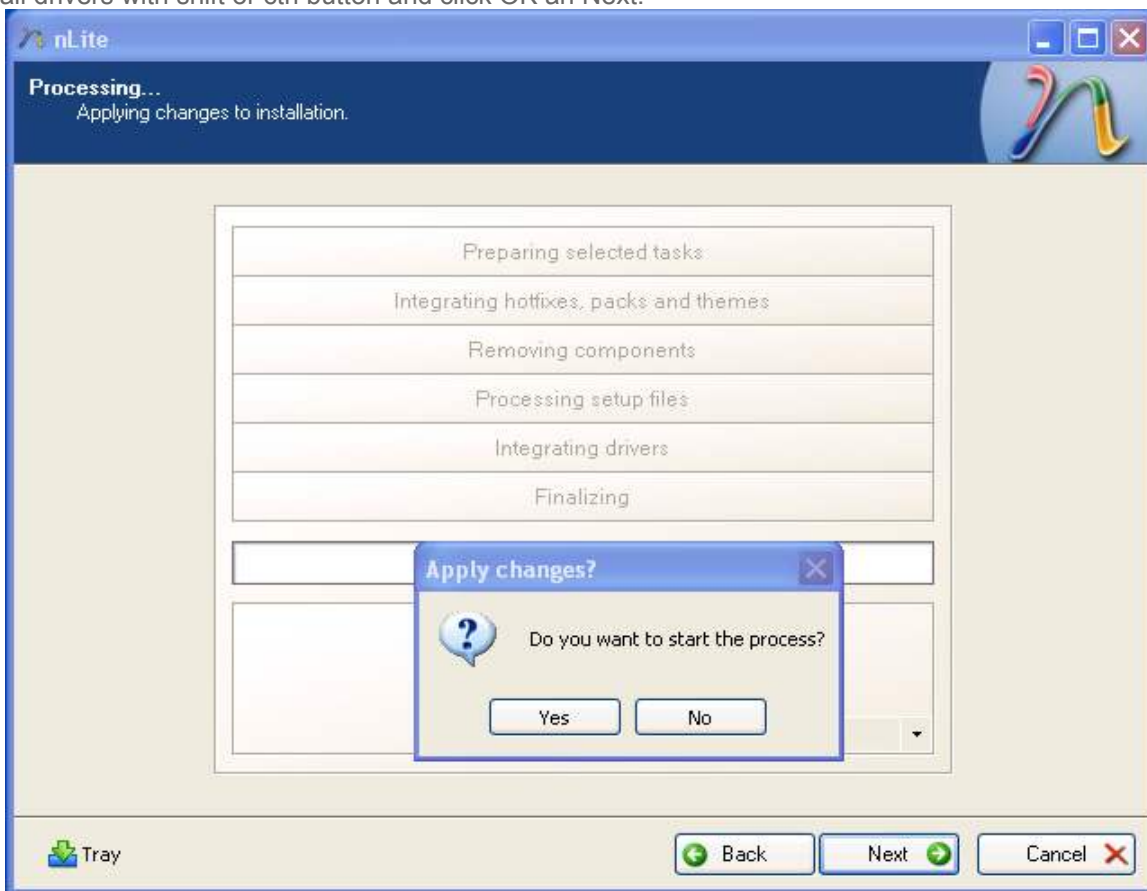
Chose **driver** and **bootable ISO** by mouse and click next



Click **insert** single driver and choose iaachi.inf from you sata driver folder



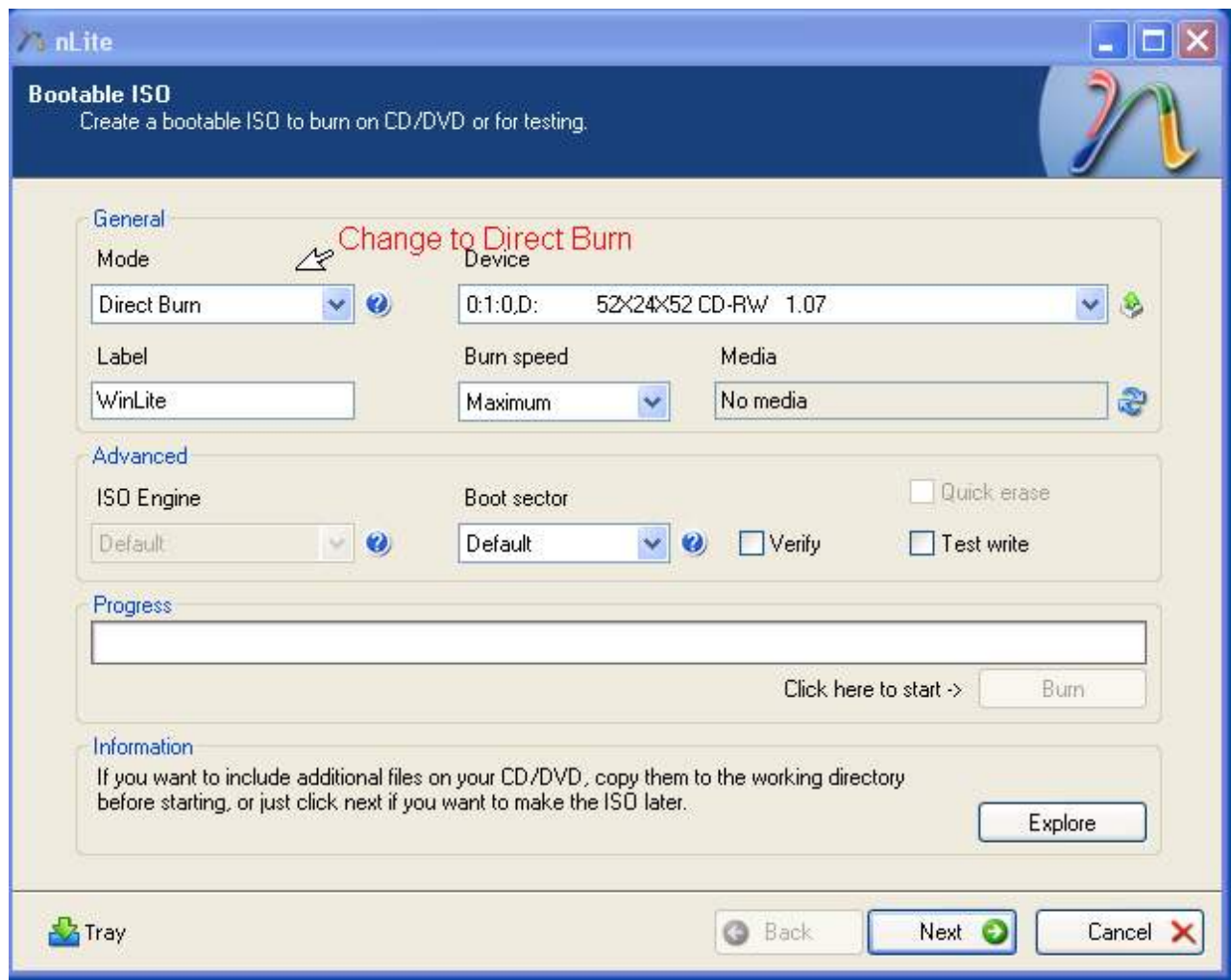
Select all drivers with shift or ctrl button and click OK an Next.



You will show a message "Do yo want to start the process". Click Yes and wait.

Click next.





Mode: Direct burn , Label: write your own label , Burn speed: Write slowly 8x is enough. Then click „Burn“ after burning click „Next“

Remove CD from cd burner Label it „XP with SATA Driver“ and help other people or make money.

IMPORTANT: You will need XP Pack2

[www.microsoft.com/downloads/details.aspx?familyid=049C9DBE-3B8E-4F30-8245-9E368D3CDB5A&displaylang=en](http://www.microsoft.com/downloads/details.aspx?familyid=049C9DBE-3B8E-4F30-8245-9E368D3CDB5A&displaylang=en)

For advance users only  
Только для тех кто знает компьютер.

All drivers you will find here:

[www.jetway.com.tw/evisn/download/driver/index.htm](http://www.jetway.com.tw/evisn/download/driver/index.htm)